

DocuScan
C4250
C3200A



DocuScan C4250/C3200A Network Colour Scanner

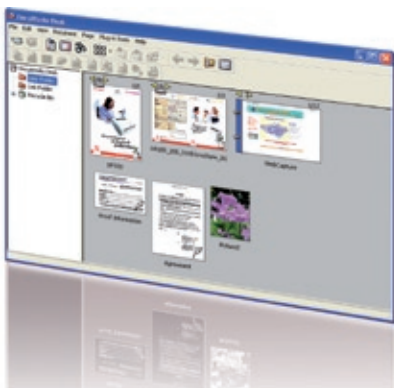
A new era in workplace
functionality



DocuScan C4250/C3200A Network Colour Scanner

Outstanding Scanning and Copying Capabilities. New high-speed colour network scanners from Fuji Xerox add a new level of functionality to your workplace.

Used independently or as an inexpensive add-on to your DocuPrint* colour laser printer, these scanners combine super-fast document processing with the versatility to meet the precise needs of your working environment. Full-featured scanning and copying capabilities and a range of highly-effective tools enable you to create PDFs from hard copy, produce email documents from hard copy and more – plus you can depend on quality that is second to none.



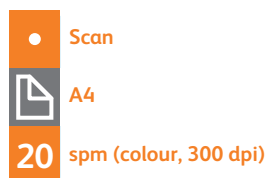
The DocuWorks software is an easy way to digitalise all your company's documents. Instant searching, quick browsing and unified printing will improve your company's paper work management and will help you set-up a "paperless office".

Outstanding Scanning

A high performance media processor and control technology developed jointly by Fuji Xerox and Intel gives you more processing power!

- Operate your scanner from a network PC or directly
- High-quality output
- New Image Resolution Enhancement for better quality scanning from the duplex automatic document feeder (DADF) or flat-bed scanning.
- Built-in duplex scanning capability
- Large, bright 4.7-inch easy-to-use touch-screen colour LCD gives a clear view of all document information
- Preview scanned images before saving or sending
- Rotate documents
- Control all operations from the scanner – you don't need a PC
- Scan documents then send them directly to an email address or an FTP server. Store up to 350 email, SMB, and FTP addresses in the memory.
- Save scanned documents to a server or USB flash memory.
- Advanced Security Features include password authentication and administration tools
- DocuWorks 5.0 software for increased productivity

DocuScan C3200A Quick Facts

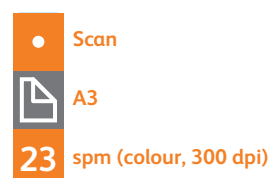


WxDxH:
448 x 502 x 194 mm

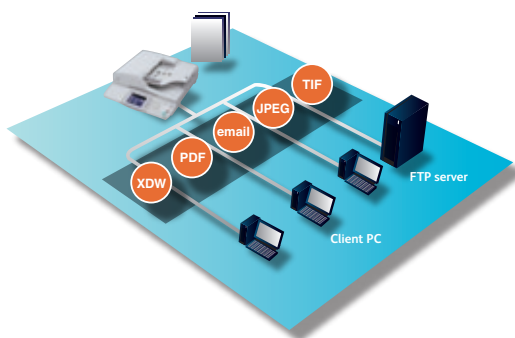


DocuScan C3200A and DocuScan C4250

DocuScan C4250 Quick Facts



WxDxH:
582 x 658 x 209 mm



Scan in multiple formats to varied destinations

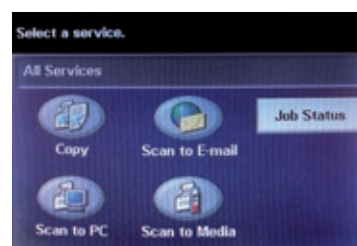
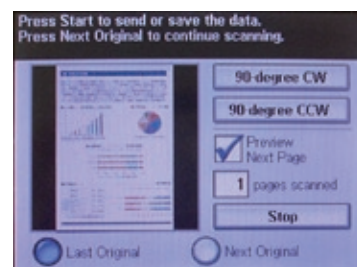
DocuScan delivers powerful document processing and archiving capabilities

With DocuScan's powerful features it will quickly become the hub of productivity in your workplace.

- **Scan to email** - scanned documents can be sent directly to email accounts.
- **Scan to an FTP server** - scanned documents can be sent directly to an FTP server.
- **Scan to media** - save scanned documents to a server or USB flash memory.

Powerful, Easy-To-Use Interface

- Large 4.7-inch, bright colour LCD.
- Shows all document information clearly.
- Preview scanned images before saving and sending.
- You can inspect and modify documents before saving and sending, giving you powerful control over your documents.
- Touch-screen for easy operation.
- The easy-to-use touch-screen control panel allows you to control all scanning operations from the scanner itself, eliminating the need for a PC.



A simple plug-and-play connection to your DocuPrint* printer via a USB2.0 interface creates a cost-effective multifunction capability.

The units modular design allows great flexibility in networking between multiple devices and positioning in any workplace.

Specifications of DocuScan C4250/3200A


Scan Function		C4250	C3200A
Type		Flatbed/DADF scanner	
Scan Type		CCD sensor	
Resolution (optical)		600 dpi	
Resolution settings		600 dpi, 400 dpi,	300 dpi, 200 dpi
Operating System		Windows® 98/ME/NT/2000/ XP/Server™ 2003	
Interfaces		Ethernet, USB2.0 (Type A)	
Output format	Black	TIFF (single-page/multi-page), XDW, PDF	
	Greyscale	TIFF, JFIF(JPEG), XDW, PDF	
	Full colour	TIFF, JFIF(JPEG), XDW, PDF	
Data compression	Black	MH (photo), MMR (text, text/photo)	
	Greyscale	JPEG	
	Full colour	JPEGSupported	
Flatbed scan area		A3	A4
DADF		Built-in	
DADF scan area		A3	Legal
Duplex		Yes	
DADF capacity		50 sheets	
Simplex scan speed (black/colour or grey)		40 spm/23 spm*	31 spm/20 spm*
Duplex scan speed (black/colour or grey)		20 spm/14 spm*	15 spm/10 spm*
Supported protocols		TCP/IP (FTP, SMB, SMTP)	
Paper size (max.)		297 mm x 432 mm	215.9 mm x 355.6 mm
Paper size (min.)		100 mm x 148 mm	140 mm x 140 mm
Paper weight (simplex)		35-120 g/m2	60-105 g/m2
Paper weight (duplex)		50-120 g/m2	60-105 g/m2
Electrical		100 - 240V ± 10 %, 50 Hz/60 Hz	
Power Consumption		Printing 120 W, Standby 40 W	Printing 100 W, Standby 35 W
Dimensions (W x D x H)		582 mm x 658 mm x 209 mm	448 mm x 502 mm x 194 mm
Weight		24 kg	15 kg
Warranty		One year on-site warranty	

*Scan speed is calculated at A4 size, 300dpi

Accessories	
Scanner Stand	ES100011
Dimensions (W x D x H)	577 mm x 735 mm x 980 mm
Weight	19 kg
(Can be used with both the DocuScan C4250 and DocuScan C3200 A)	

Printers compatible with the DocuScan Scanner	
DocuPrint C4350	
DocuPrint C2255	
DocuPrint C3055DX	
DocuPrint 2065/3055	
DocuPrint C3300DX	
DocuPrint C2200	
DocuPrint C2120	
DocuPrint C1110	

Descriptions in this material, product specifications and/or appearances are subject to change without prior notice due to improvements. Please note that the product colour appears differently from the actual colour as a result of properties of papers or printing ink. Windows and Windows NT are registered trademarks of Microsoft Corporation. Macintosh and Mac OS are trademarks of Apple Computer, Inc. HP-GL is a registered trademark of Hewlett-Packard Company. Other company names or product names are registered trademarks or trademarks of each company.

**For Your Safe Use**

Before using the product, read the Instruction Manual carefully for proper use.
Use the product with an appropriate adequate power source and voltage displayed. Be sure to establish a ground. In the case of a failure or short circuit, an electric shock may result.

Reproduction Prohibitions Please note that reproduction of the following is prohibited by law. Domestic and overseas bank notes and coins, government-issued securities, national bonds and local bond certificates. Unused postage stamps and post cards. Certificate stamps stipulated by law. The reproduction of works for copyright purposes (literary works, musical works, paintings, engravings, maps, cinematographic works, photographic works, etc.) is prohibited except when they are reproduced personally, at home or within limited range according to the above. This product is equipped with an anti-counterfeit feature. This feature is not intended to prevent illegal reproduction. Be extremely careful about the management of equipment used.

For more information or for your nearest authorised Fuji Xerox printer reseller, visit our website or call:

Fuji Xerox Asia Pacific
14a Rodborough Road Frenchs Forest NSW 2086

Australia 1300 793 769
New Zealand 0800 993 769

www.fujixeroxprinters.com.au
www.fujixeroxprinters.co.nz

